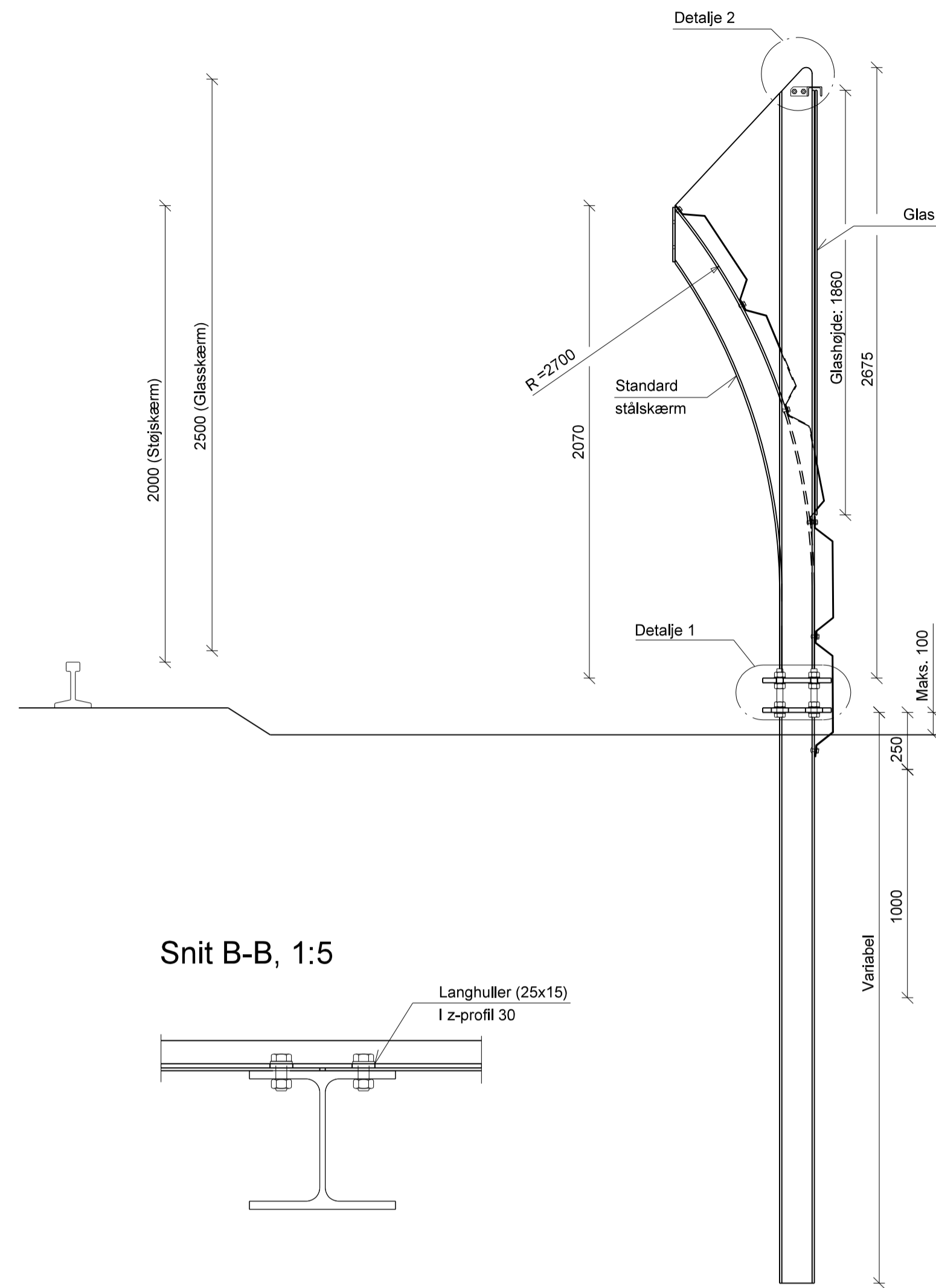
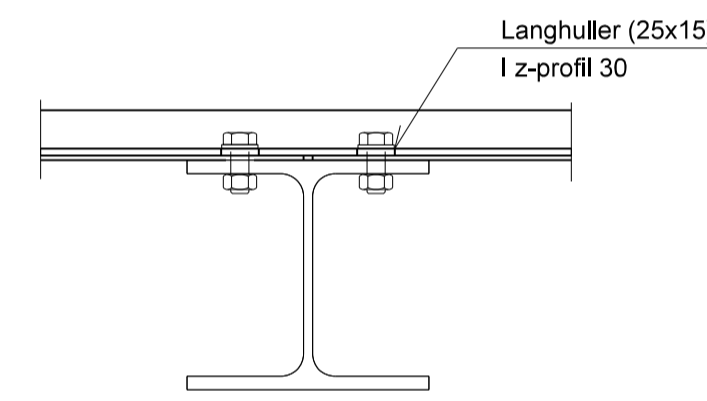


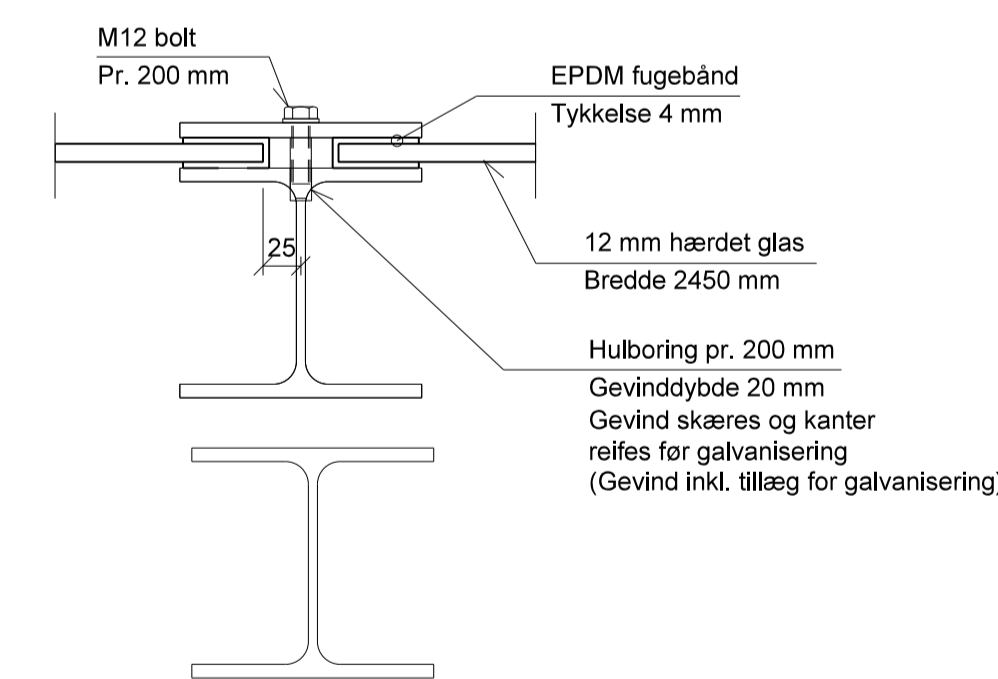
Snit A-A, 1:20



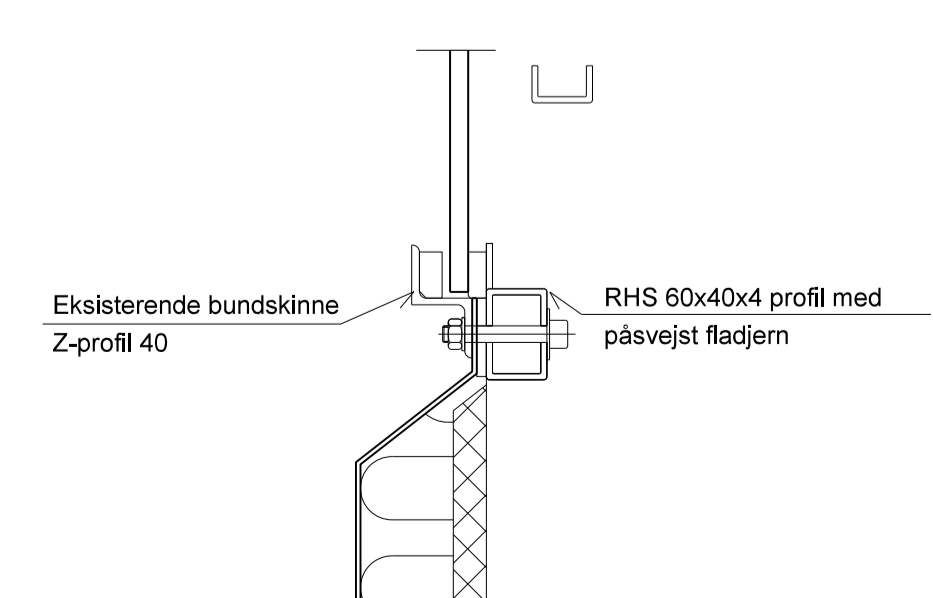
Snit B-B, 1:5



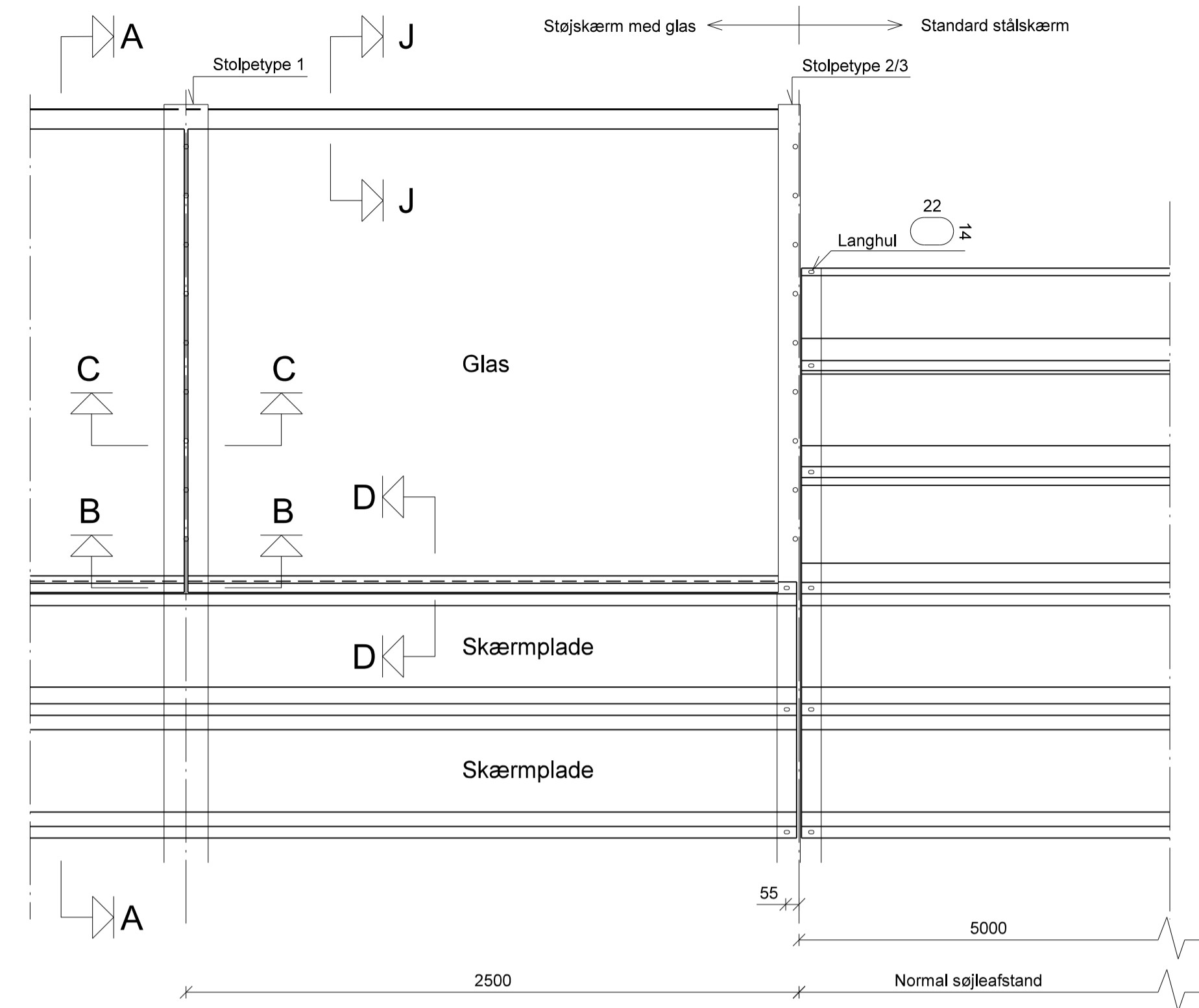
Snit C-C, 1:5



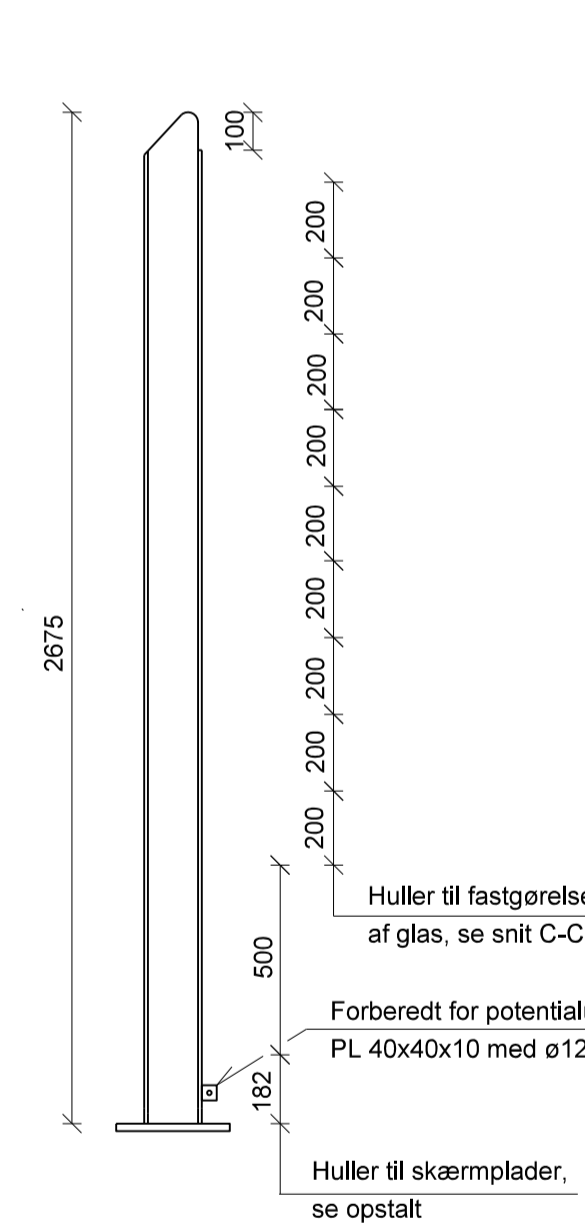
Snit D-D, 1:5



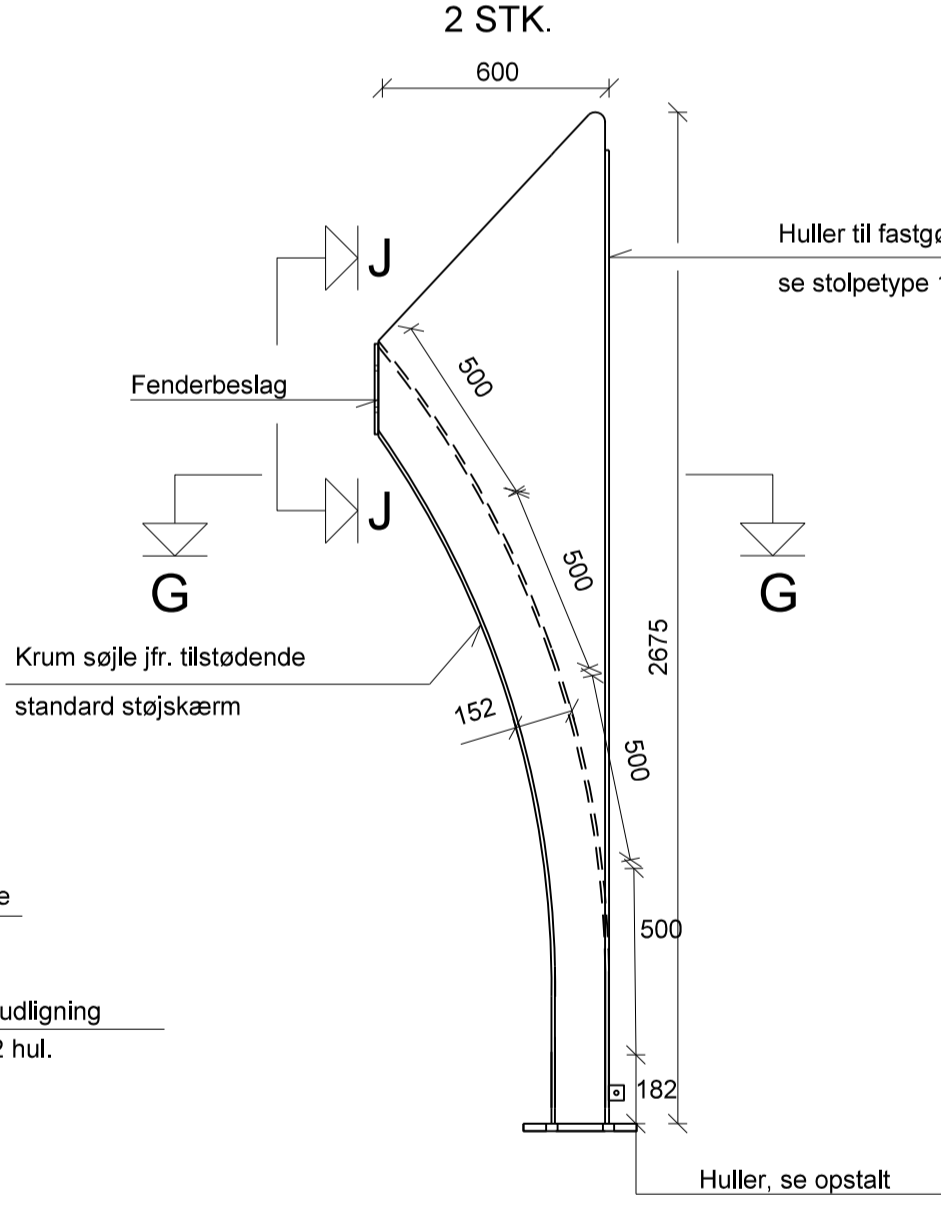
Opstalt, 1:20



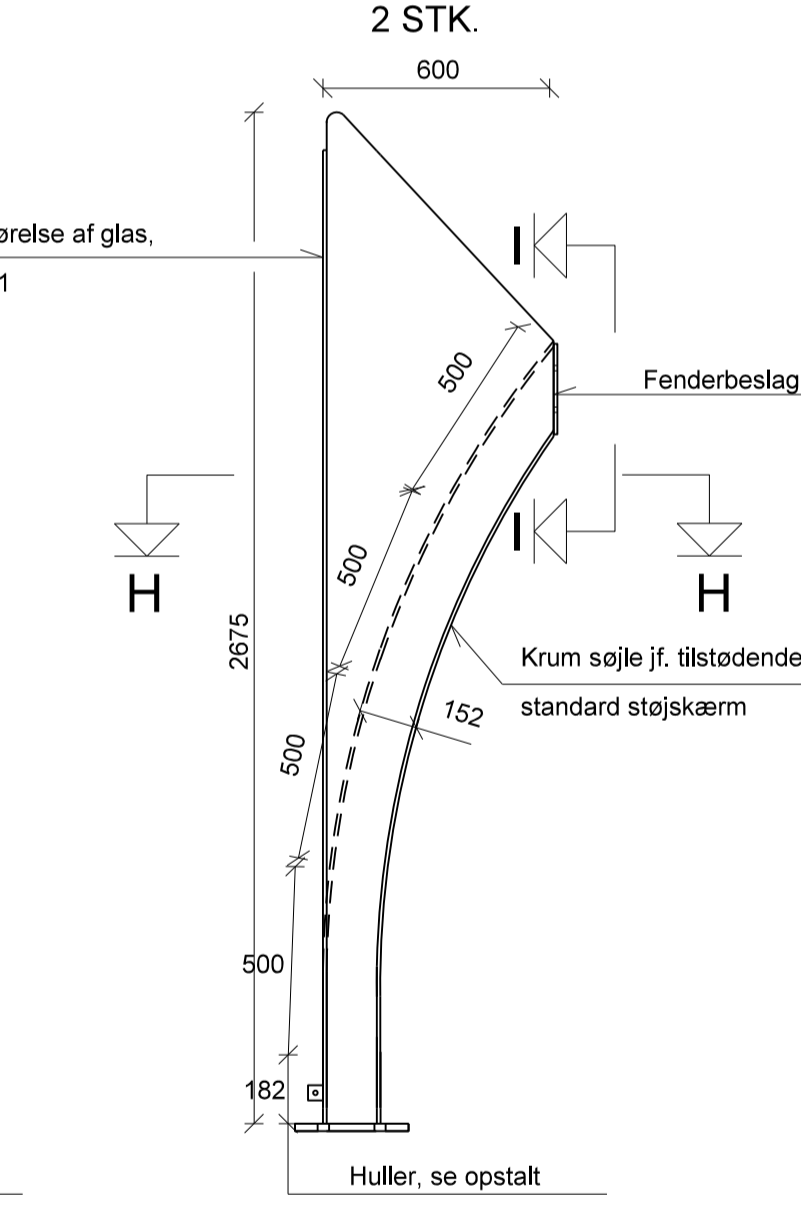
Stolpetype 1, 1:20



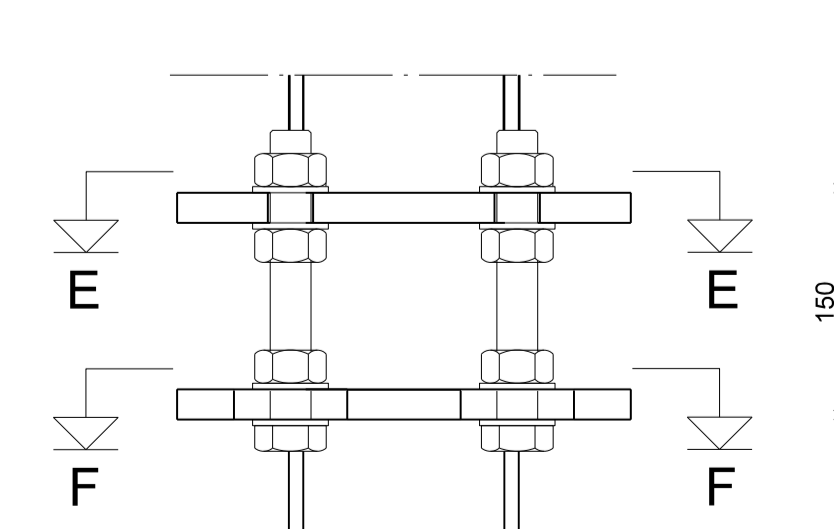
Stolpetype 2, 1:20
2 STK.



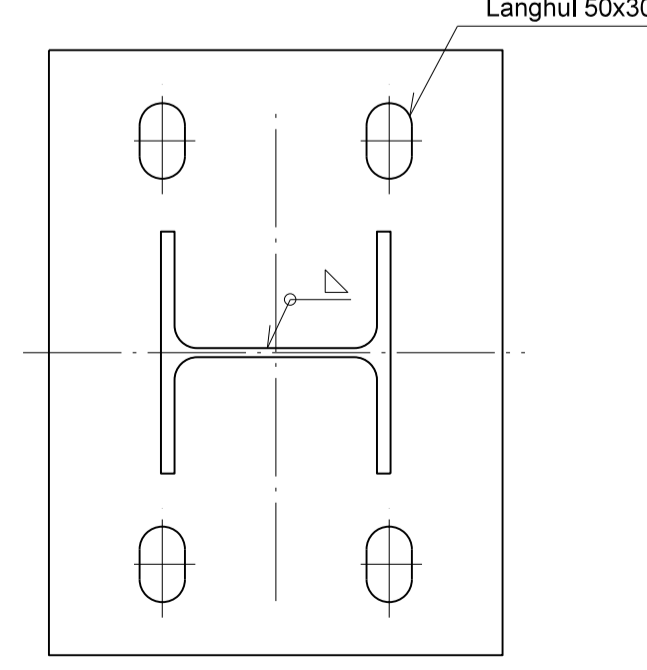
Stolpetype 3, 1:20
2 STK.



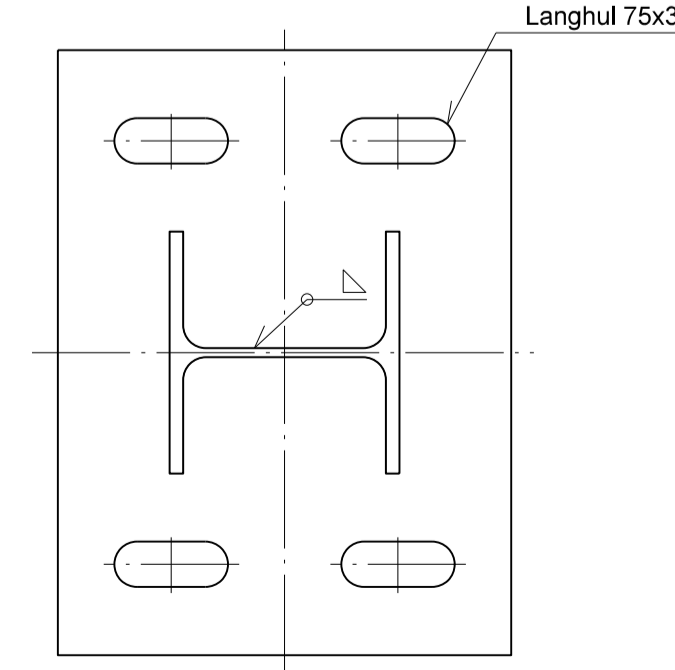
Detalje 1, 1:5



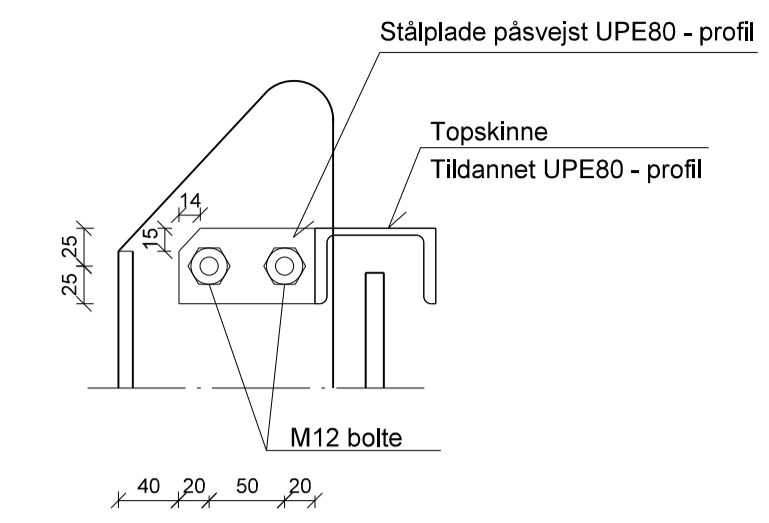
Snit E-E, 1:5



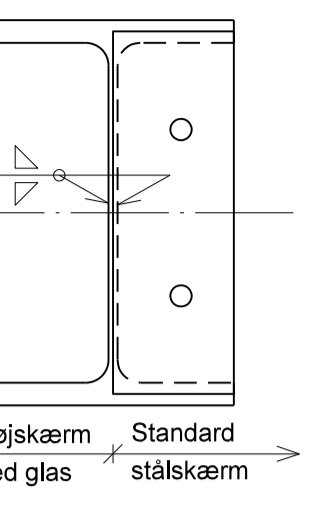
Snit F-F, 1:5



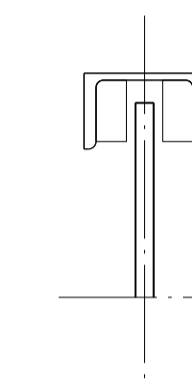
Detalje 2, 1:5



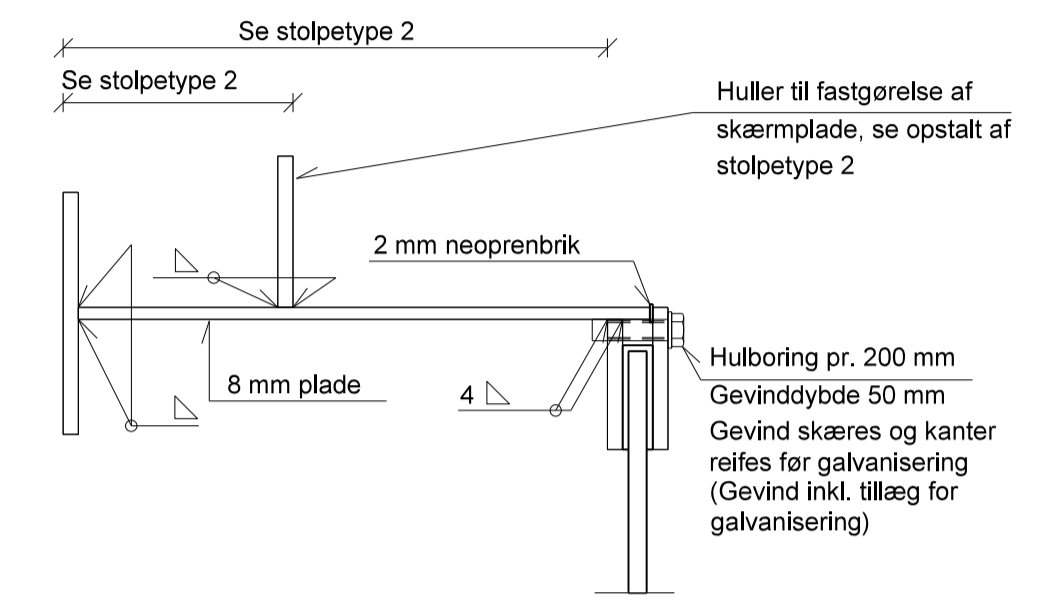
Snit I-I, 1:5



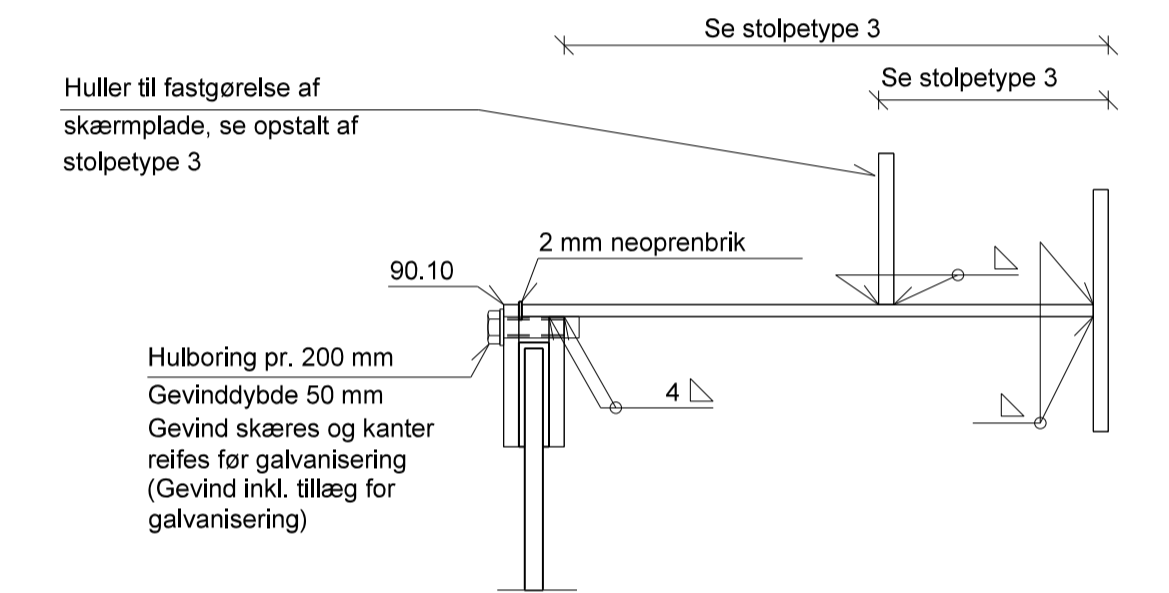
Snit J-J, 1:5



Snit G-G, 1:5



Snit H-H, 1:5



Noter

Ubenævnte mål i mm
De på tegningen viste profilstørrelser, bolt dimensioner m.v. er vejledende

Denne tegning er printet fra PDF-format - skala kan ikke påregnes at være korrekt

	Verificeret Af:	Adresse Banedanmark Amerika Plads 15 2100 København Ø	Projektering COWI A/S Vestre Stationsvej 7 5000 Odense C
	1. udgave Dato og initialer 01.10.2012 ANFR	Seneste udgave Dato og initialer 01.10.2012 AAH	Mål 1:5 / 1:20 Enhed
Udarbejdet 01.10.2012 ANFR	Godkendt 01.10.2012 JEJ	Udgave 01.00	Tegningsnr. Bilag G
© Copyright Banedanmark	Sprog Dansk	Udgave 01.00	Dato 01.10.2012
			Sideaf sider 1/1